

Downton Abbey®

FABRICS BY KATHY HALL



Table Talk Quilt Design:
Jean Ann Wright

Quilt Size: **52" x 66"**

andoverfabrics.com



About The Downstairs

Based on the small prints that Mrs. Patmore, Daisy, Ivy, and other house staff wear. They're unassuming prints, which add a little color to what would otherwise be a life of uniformed servitude. Tiny prints, little plaids, stripes. Not overly bold; the colors reflect the Downstairs lifestyle in that they have their own somewhat muted sensibility.



Downton™ and Downton Abbey®. ©2014
Carnival Film & Television Limited. All Rights Reserved.

andover



makower uk
The Henley Studio

Free Pattern Download Available

1384 Broadway New York, NY 10018
Tel. (800) 223-5678 • andoverfabrics.com

Table Talk



Introducing Andover Fabrics new collection:
Downton Abbey® – The Downstairs by Kathy Hall
Quilt design by Jean Ann Wright

Quilt finishes 52" x 66"
12 Blocks: 12" x 12"

Muted, dainty prints are used for this traditional throw-size quilt based on the Chimney Sweep block, popular in the 1920s and 1930s. The choice of blocks is appropriate since the fabric line honors the characters of Downton Abbey who work below stairs to serve the Crawley family in this most popular Masterpiece Classic television production.

Cutting Directions

Note: Read assembly directions before cutting patches. All measurements are cut sizes and include 1/4" seam allowances. A fat 1/4 is an 18" x 21"-22" cut. Borders are cut the exact lengths required plus 1/4" seam allowances. WOF designates the width of fabric from selvedge to selvedge (approximately 42" wide).

Fabric A Cut (2) borders 2 1/2" x 54 1/2", cut lengthwise
Cut (2) borders 2 1/2" x 44 1/2", cut lengthwise
Cut (17) sashes 2 1/2" x 12 1/2"

Fabric B Cut (2) borders 4 1/2" x 58 1/2", cut lengthwise
Cut (2) borders 4 1/2" x 52 1/2", cut lengthwise
Cut (6) squares 2 1/2"

Fabric C Cut (6) strips 2 1/4" x WOF for binding
Cut patches for 3 blocks (see 3 Brights list)

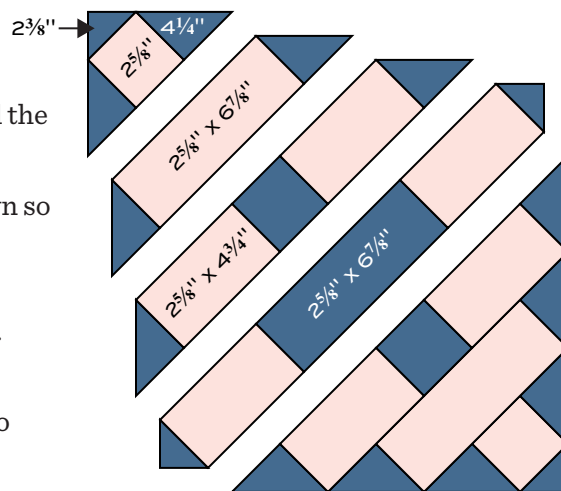
Fabric Requirements

		Yardage	Fabric
Fabric A	border, sashes	1 3/4 yards	7598-N
Fabric B	border, setting	1 3/4 yards	7602-K
**Fabric C	blocks	3/4 yard	7332-R
3 Brights	blocks	3/8 yard ea.	
	7332-K1	7332-B1	7332-N
12 Fat 1/4's	blocks	fat 1/4 yard ea.	
	7597-B	7597-G	7597-R
	*7598-B	7598-R	7600-B
	7600-R	7601-B	7601-G
	7601-R	7602-B	7602-R
*Backing		3 1/2 yards	7598-B
**includes binding			

- 3 Brights** Cut patches for 3 blocks from each:
Cut (9) squares 4 1/4", cut in half diagonally twice to make 36 quarter-square triangles
Cut (3) rectangles 2 5/8" x 6 7/8"
Cut (6) squares 2 5/8"
Cut (6) squares 2 3/8", cut in half diagonally to make 12 half-square triangles
- 12 Fat 1/4's** Cut patches for 1 block from each:
Cut (2) rectangles 2 5/8" x 6 7/8"
Cut (6) rectangles 2 5/8" x 4 3/4"
Cut (2) squares 2 5/8"
- Backing** Cut (2) panels 37" x 60", pieced to fit quilt top with overlap on all sides

Making the Quilt

1. Referring to the Block diagram, sew bright patches to the light rectangles and squares to make rows. Press seam allowances toward the bright patches. Join the rows to make a block. Make 12 blocks.
2. Referring to the Quilt Diagram, arrange the blocks in the order shown so blocks with the same bright fabric are positioned diagonally. Sew 3 blocks alternately with 2 sashes to make a block row. Make 4.
3. Sew 3 sashes alternately with 2 Fabric B squares to make a sash row. Make 3. Join the rows in the order shown.
4. Sew shorter Fabric A borders to the sides, and sew shorter borders to top and bottom. Repeat with Fabric B borders.

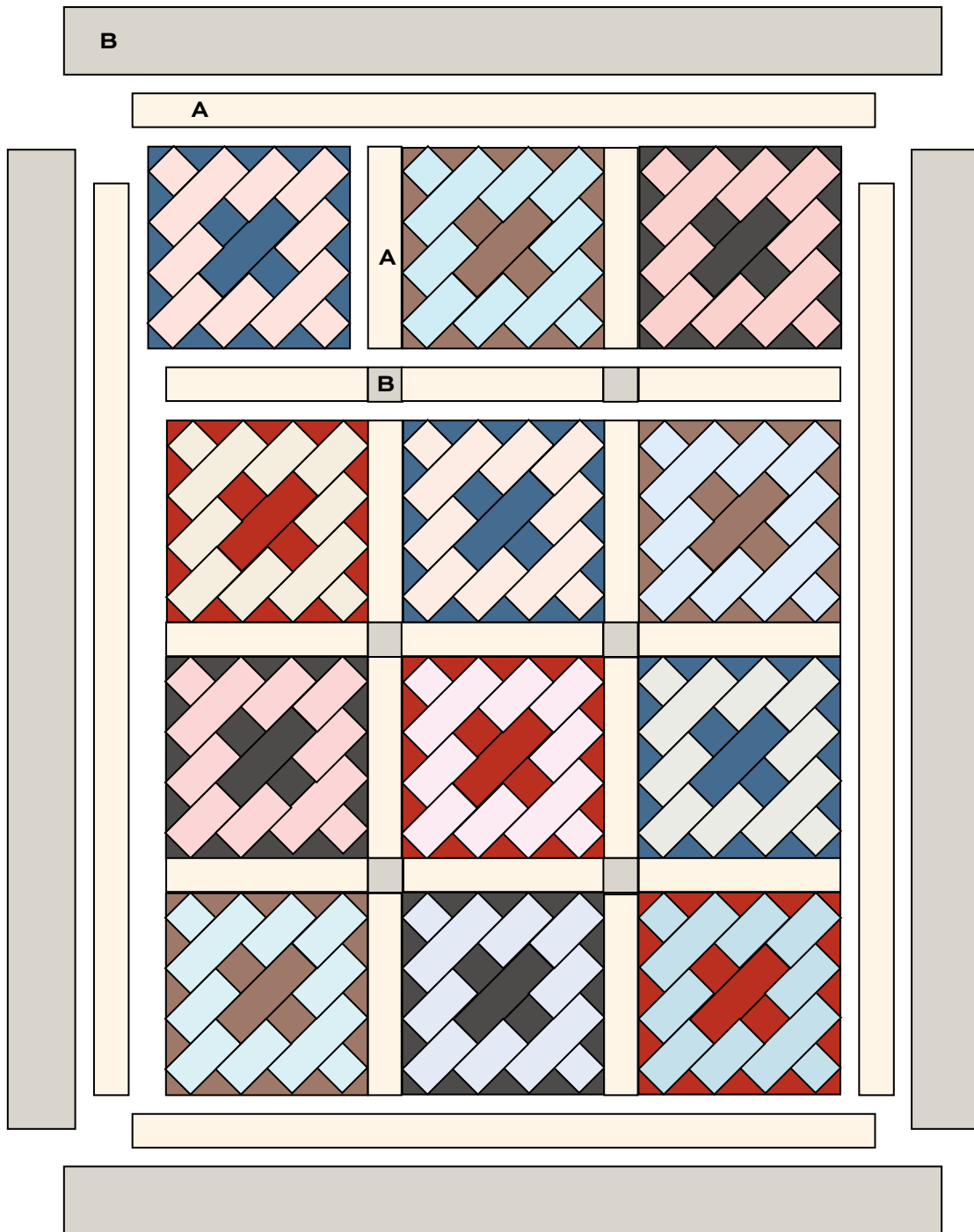


Block – Make 12

Table Talk

Finishing the Quilt

5. Layer the quilt with batting and backing and baste. Quilt in the ditch around borders and block patches. Bind to finish the quilt.



Quilt Diagram

Downton Abbey®

The Downstairs



FABRICS BY KATHY HALL



7597-B



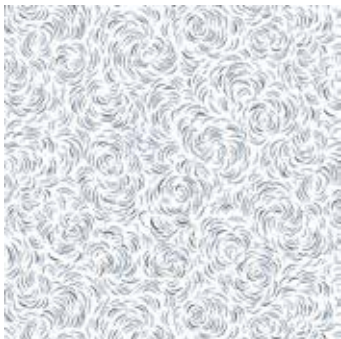
7597-G



7597-R



7600-B



7598-B



7598-N



7598-R



7600-R



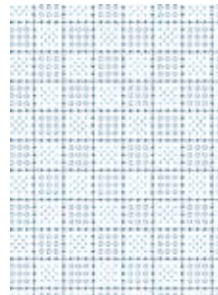
7601-B



7601-G



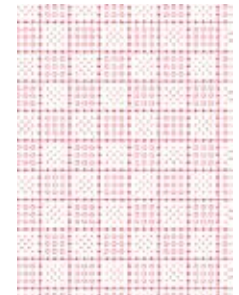
7601-R



7602-B



7602-K



7602-R

Blend with additional fabrics from Downton Abbey®



7332-B1



7332-K1



7332-N



7332-R

All fabrics used in quilt pattern. Fabrics shown are 50% of actual size.

andover



makower uk
The Henley Studio

Free Pattern Download Available

1384 Broadway New York, NY 10018
Tel. (800) 223-5678 • andoverfabrics.com